

ANEXO FOTOGRÁFICO DEL
ENSAYO INTERLABORATORIO
PARA FANGOS ACTIVOS (25/2/03)

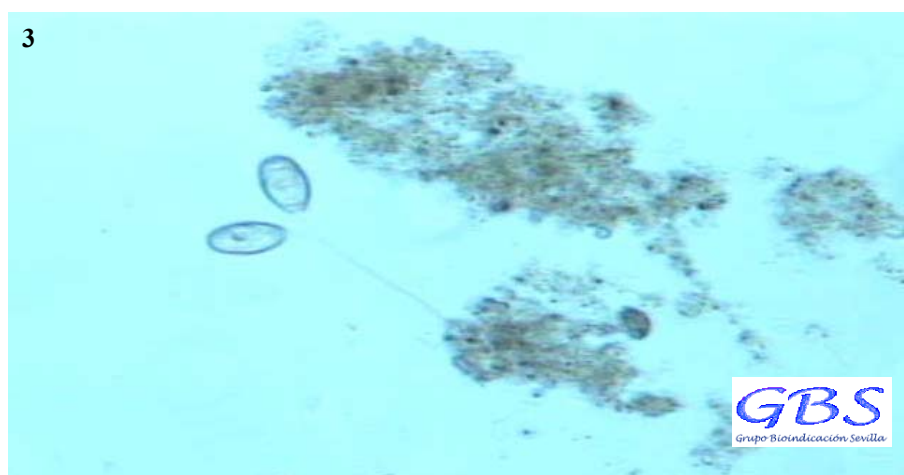
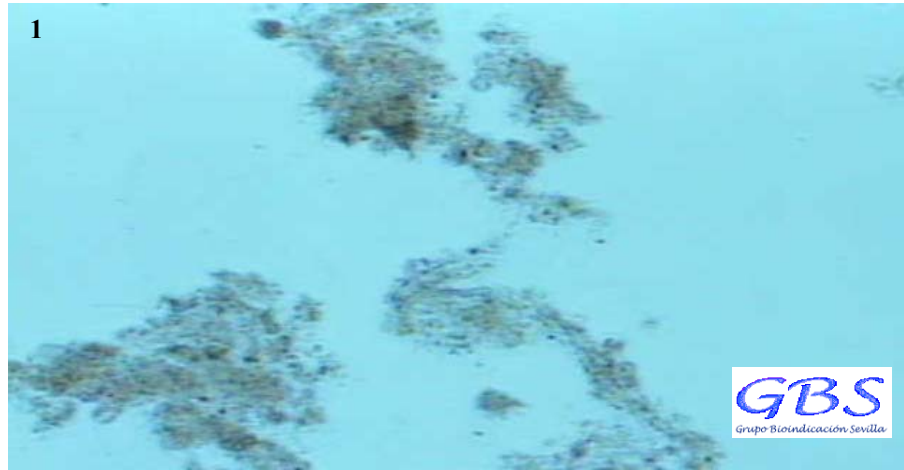
ORGANIZADO POR GBS

Grupo Bioindicación Sevilla

www.grupobioindicaciónsevilla.com

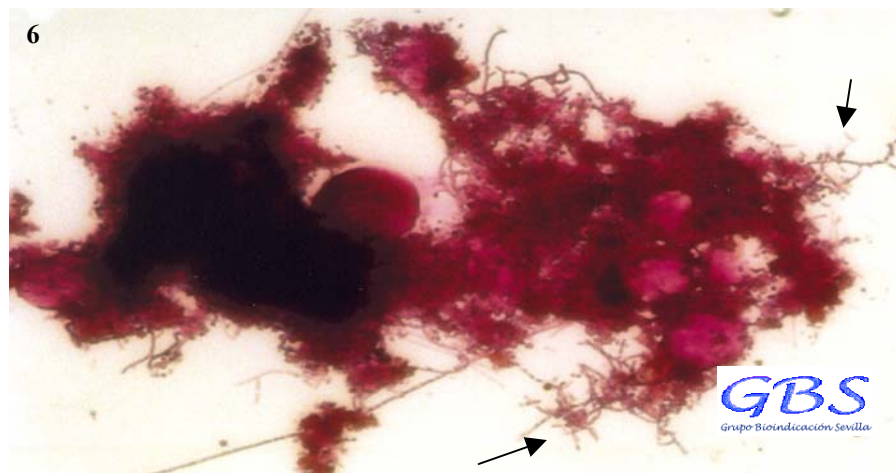
ANEXO IMÁGENES FOTOGRÁFICAS: INTERLABORATORIO 25/II/03

1. Estado de floculación.

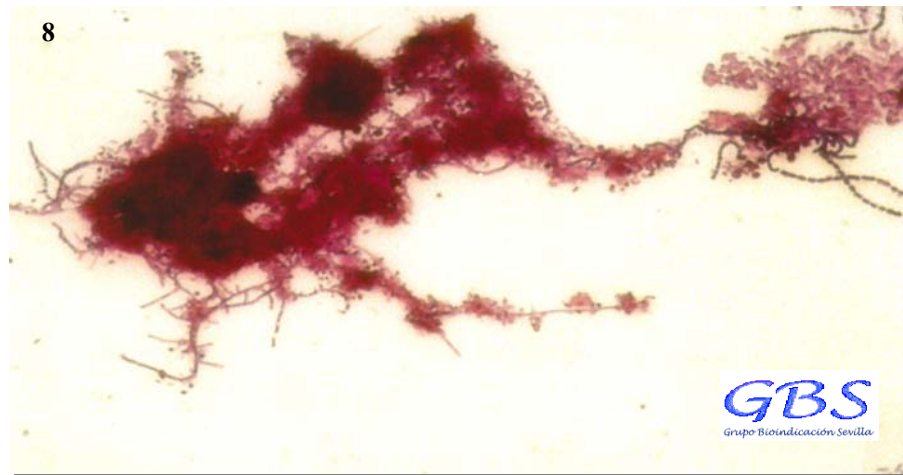
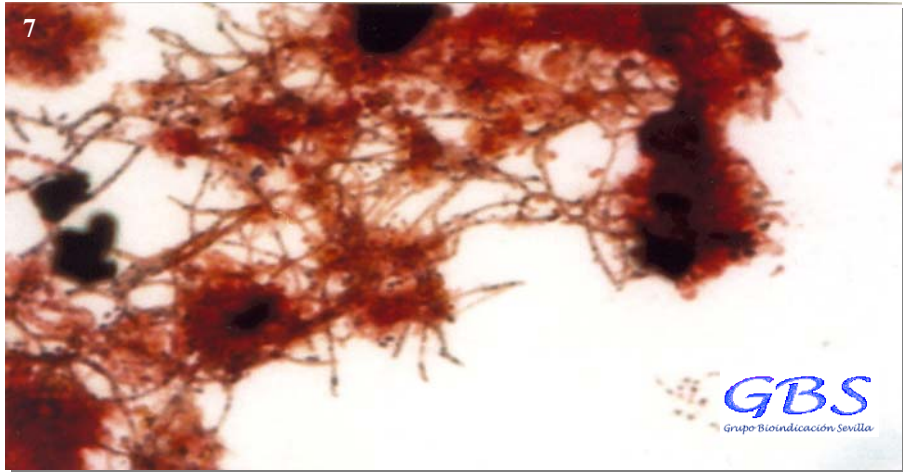


1, 2 y 3: Flóculos tipo (x100).

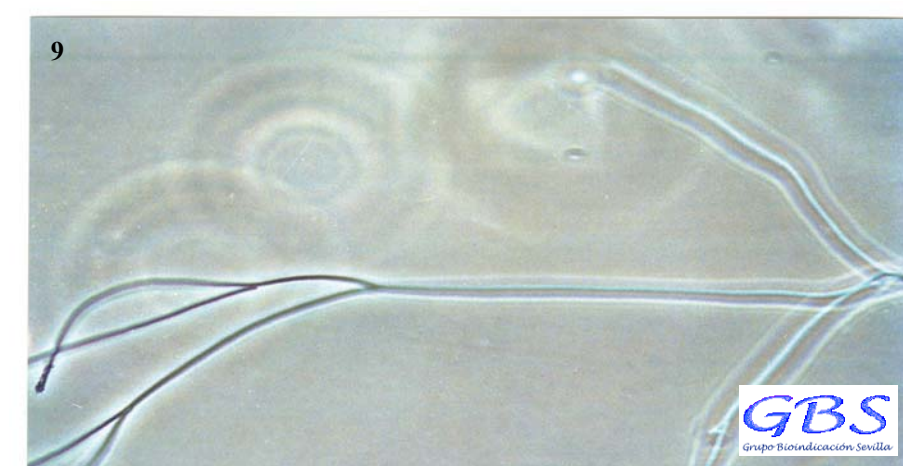
2. Filamentosos.



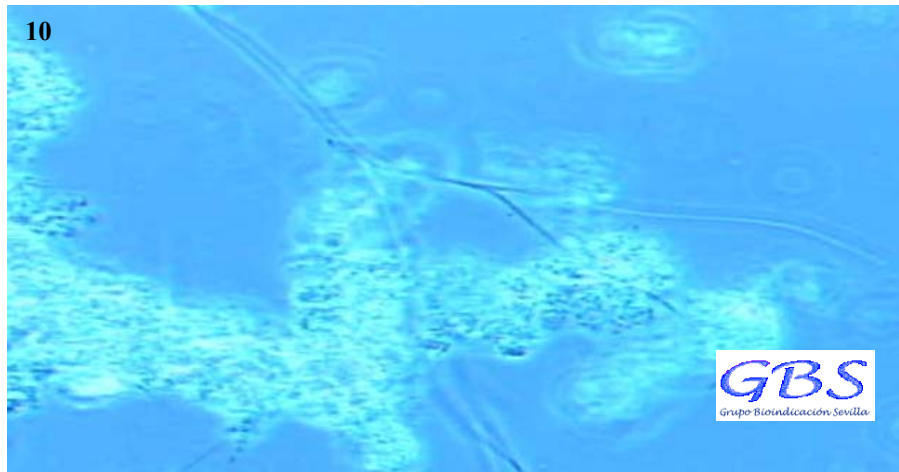
4: Tipo 1863 (x100) y 5: Tipo 1863 (x1000)
6: *Nocardia* sp. (x400)



7: *Nocardia* sp.(x1000) y 8: *Nocardia* sp. (x400).



9: *Sphaerotilus natans* (x400).

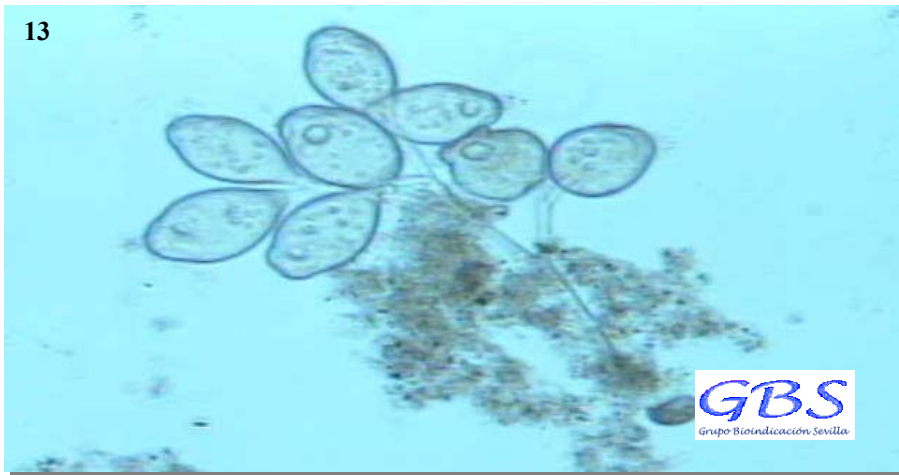


10: *Sphaerotilus natans* (x200).
11: Tipo 1702 (x1000).

Bacteria del azufre 0914



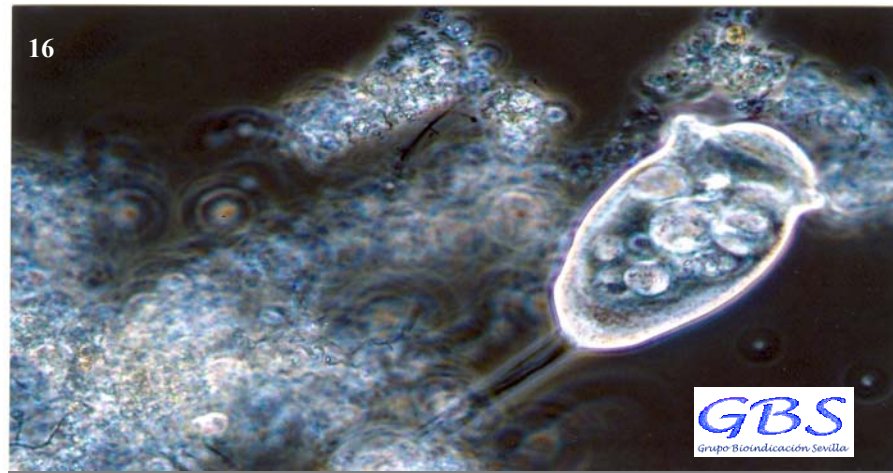
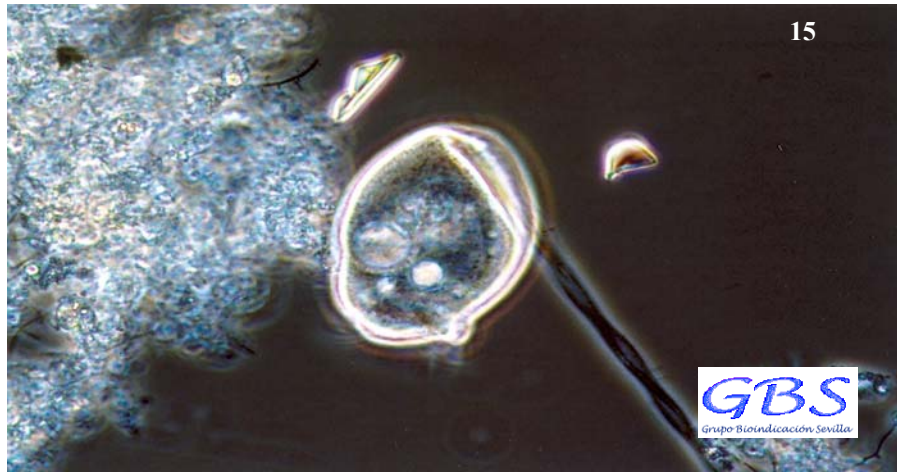
3. Protozoos y metazoos.



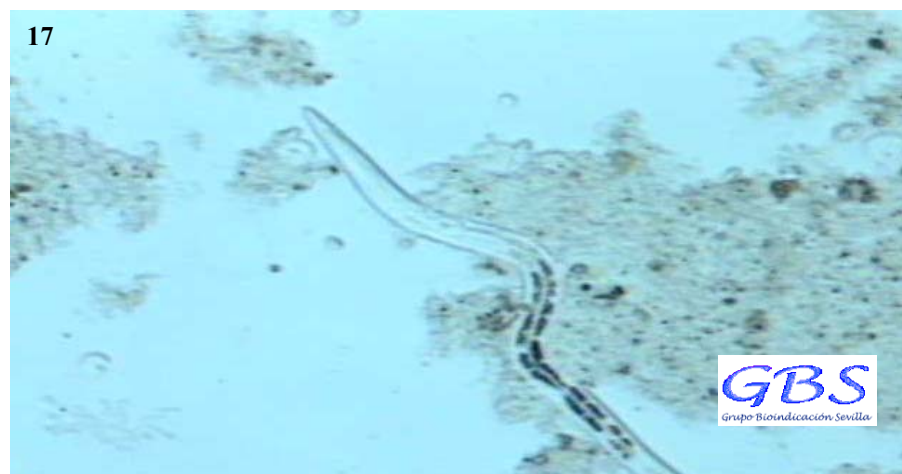
12: *Epistylis* sp. (x100). 13: *Epistylis* sp. (x100).



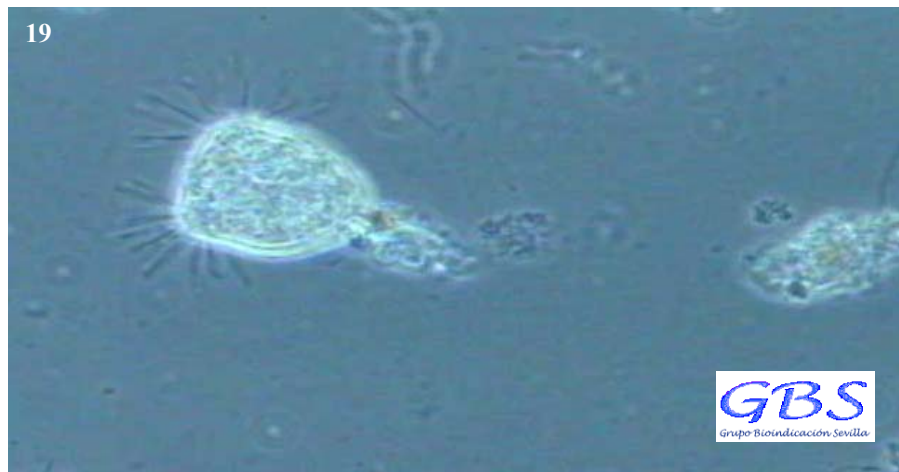
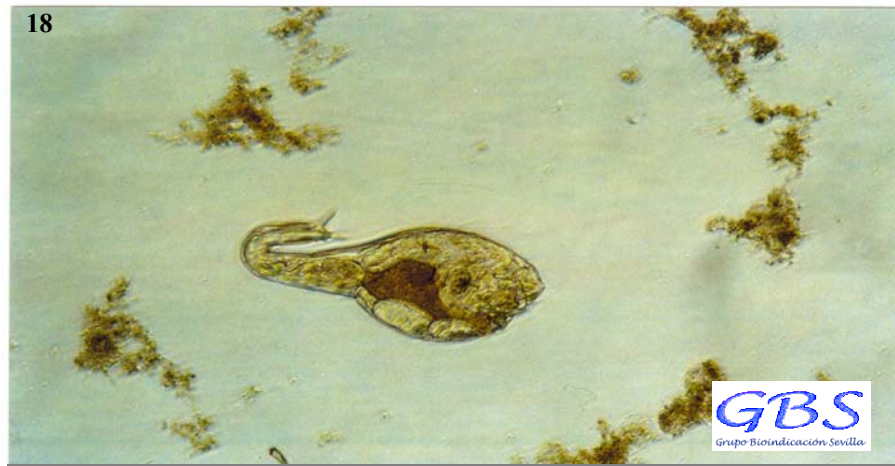
14, 15 Y 16: *Vorticella* sp. (x400).



17: Nematodo (x100).



18: Rotífero (x100).



19: Suctor (x200).



20: Gemación de una larva trocófora (x200).